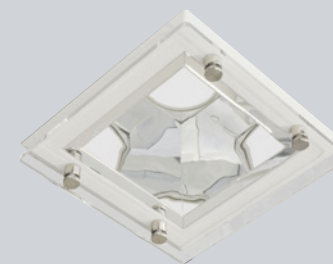


(HG)



(EHG)



(G)



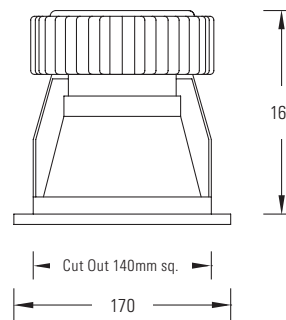
(EG)

LSDL

LED

A range of square LED downlights incorporating LED engines with active and passive heat sinks. The LSDL offers significant energy and maintenance savings when compared with conventional compact fluorescent downlights.

- Available with a wide range of decorative glass attachments.
- Colour temperature – available in 3000K and 4000K versions.
- Predicted lifetime >50,000 hours.
- No ultra violet or infra red emissions.
- Standard ITAB Prolight LED warranty.



SPECIFICATION

- Body:** Die cast aluminium bezel.
- Reflectors:** Specular faceted (LOR = 96%) Miro 27
- Drivers:** Option of fixed output, DALI or DALI wired for Switchdim operation via a wall mounted retractive switch.
Add suffix '**D**' to specify DALI driver. e.g. LDLW/20**D**/4K/M
Add suffix '**DW**' to specify DALI driver wired for Switchdim operation. e.g. LDLW/20**DW**/4K/M
- Emergency:** 3 hour maintained emergency conversions can be specified by adding '**E**' into catalogue number: e.g. LSDLW/20**E**/4K/M
1100 lumen ballast lumen factor = 21%
2000 lumen ballast lumen factor = 12%
3000 lumen ballast lumen factor = 9%
- Attachments:** Clear Halo Glass: Add suffix '**HG**'
Etched Halo Glass: Add suffix '**EHG**'
Clear Glass: Add suffix '**G**'
Etched Glass: Add suffix '**EG**'
- Special Applications:** Available to special order:
• DALI Wall mounted controllers
• Colour Changing (Philips Lexel)

Catalogue No.	LED Flux (Lumens)	Luminaire Flux (Lumens)	LED Wattage	Total System Wattage	Luminaire Lumens / Circuit Watt	Colour Temp	CRI	Weight (Kg)
LSDLW/11/3K/S	959	921	10.0	12.0	77	3000K	80+	1.6
LSDLW/11/4K/S	958	920	9.0	10.9	84	4000K	80+	1.6
LSDLW/20/3K/S	1744	1674	18.0	20.8	80	3000K	80+	1.6
LSDLW/20/4K/S	1742	1672	16.5	19.0	88	4000K	80+	1.6
LSDLW/30/3K/S	2613	2508	26.0	30.3	83	3000K	80+	1.6
LSDLW/30/4K/S	2611	2507	24.0	27.8	90	4000K	80+	1.6