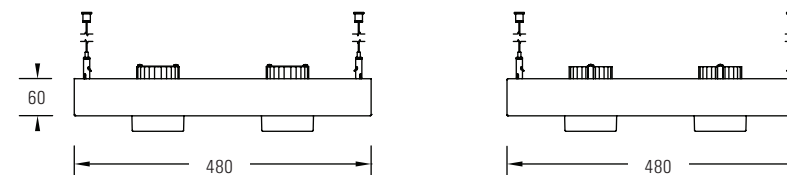




BMG LED

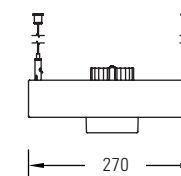
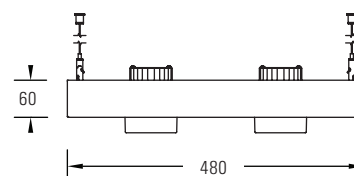
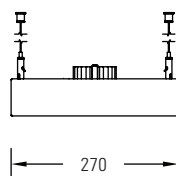
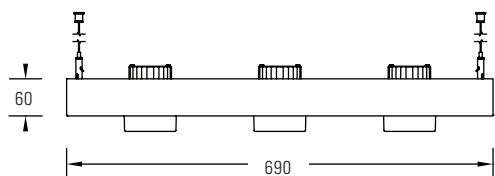
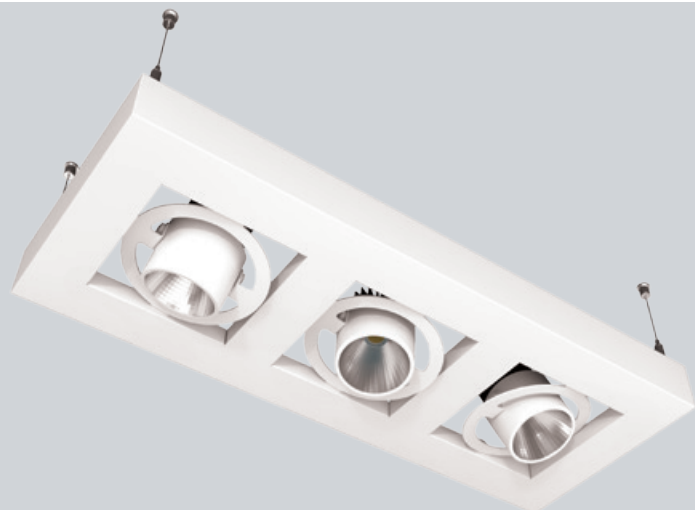
A suspended 2, 3 or 4 light adjustable gimbal luminaire ideal for retail and display purposes. With lumen packages from 800 lumens per head up to 3,800 lumens per head, all passively cooled, the BMG gimbal is a versatile product. Supplied with fixed output driver as standard, with dimmable versions available on request.

- Suspended display gimbal.
- Ideal for use in retail and display areas.
- Nominal lumen outputs are shown in the tables, but alternative preset outputs are available in the range 800-3800 lumens per head.
- Available in 2, 3 or 4 light versions.
- Available with beam angles of spot (15°), medium (27°), flood (41°)
- Available with fixed output, or dimmable drivers – please contact our technical department for details.
- Colour temperature – available in 3000K and 4000K versions.
- CRI 80 as standard, CRI 90 available on request.
- Finished RAL9010 as standard, other colours available on request.
- Predicted lifetime >50,000 hours.
- No ultra violet or infra red emissions.
- Photometric data available in Eulumdat format on request or via Relux website.
- Standard ITAB Prolight LED warranty.



4 Way Gimbals

Catalogue No.	Reflector	Total LED Flux	Total Luminaire Flux	Total LED Wattage	Total System Wattage	Luminaire Lumens / Circuit Watt	Colour Temp	CRI
BMG-4/F/10/4K8/S	Spot (15°)	4000	3560	22.8	27.8	128	4000K	>80
BMG-4/F/10/4K8/M	Medium (27°)	4000	3560	22.8	27.8	128	4000K	>80
BMG-4/F/10/4K8/F	Flood (41°)	4000	3560	22.8	27.8	128	4000K	>80
BMG-4/F/20/4K8/S	Spot (15°)	8000	7120	47.2	57.6	124	4000K	>80
BMG-4/F/20/4K8/M	Medium (27°)	8000	7120	47.2	57.6	124	4000K	>80
BMG-4/F/20/4K8/F	Flood (41°)	8000	7120	47.2	57.6	124	4000K	>80
BMG-4/F/38/4K8/S	Spot (15°)	15200	13528	102.4	124.9	108	4000K	>80
BMG-4/F/38/4K8/M	Medium (27°)	15200	13528	102.4	124.9	108	4000K	>80
BMG-4/F/38/4K8/F	Flood (41°)	15200	13528	102.4	124.9	108	4000K	>80



3 Way Gimbals

Part number	Reflector	Total LED Flux	Total Luminaire Flux	Total LED Wattage	Total System Wattage	Luminaire Lumens / Circuit Watt	Colour Temp	CRI
BMG-3/F/10/4K8/S	Spot (15°)	3000	2670	17.1	20.9	128	4000K	>80
BMG-3/F/10/4K8/M	Medium (27°)	3000	2670	17.1	20.9	128	4000K	>80
BMG-3/F/10/4K8/F	Flood (41°)	3000	2670	17.1	20.9	128	4000K	>80
BMG-3/F/20/4K8/S	Spot (15°)	6000	5340	35.4	43.2	124	4000K	>80
BMG-3/F/20/4K8/M	Medium (27°)	6000	5340	35.4	43.2	124	4000K	>80
BMG-3/F/20/4K8/F	Flood (41°)	6000	5340	35.4	43.2	124	4000K	>80
BMG-3/F/38/4K8/S	Spot (15°)	11400	10146	76.8	93.7	108	4000K	>80
BMG-3/F/38/4K8/M	Medium (27°)	11400	10146	76.8	93.7	108	4000K	>80
BMG-3/F/38/4K8/F	Flood (41°)	11400	10146	76.8	93.7	108	4000K	>80

2 Way Gimbals

Part number	Reflector	Total LED Flux	Total Luminaire Flux	Total LED Wattage	Total System Wattage	Luminaire Lumens / Circuit Watt	Colour Temp	CRI
BMG-2/F/10/4K8/S	Spot (15°)	2000	1780	11.4	13.9	128	4000K	>80
BMG-2/F/10/4K8/M	Medium (27°)	2000	1780	11.4	13.9	128	4000K	>80
BMG-2/F/10/4K8/F	Flood (41°)	2000	1780	11.4	13.9	128	4000K	>80
BMG-2/F/20/4K8/S	Spot (15°)	4000	3560	23.6	28.8	124	4000K	>80
BMG-2/F/20/4K8/M	Medium (27°)	4000	3560	23.6	28.8	124	4000K	>80
BMG-2/F/20/4K8/F	Flood (41°)	4000	3560	23.6	28.8	124	4000K	>80
BMG-2/F/38/4K8/S	Spot (15°)	7600	6764	51.2	62.4	108	4000K	>80
BMG-2/F/38/4K8/M	Medium (27°)	7600	6764	51.2	62.4	108	4000K	>80
BMG-2/F/38/4K8/F	Flood (41°)	7600	6764	51.2	62.4	108	4000K	>80

Colour Temperature: For colour 3000 Kelvin, replace '4K' in the catalogue number with '3K': e.g. BMG-4/F/20/3K8/F

Colour Rendering: For CRI90 version, replace '4K8' in the catalogue number with '4K9': e.g. BMG-3/F/20/4K9/F

Dimmable Drivers: To specify DALI driver, replace 'F' in the catalogue number with 'X': e.g. BMG-2/X/20/4K8/F

To specify DALI driver wired for Switchdim operation, replace 'F' in the catalogue number with 'S': e.g. BMG-4/S/20/4K8/F